

2024-2025



Learn, Lead and Live  
খুলনা বিশ্ববিদ্যালয়  
KHULNA UNIVERSITY



The Office of International Affairs (OIA)  
**INTERNATIONAL  
ADMISSION**  
2024-2025

## HOW TO GET TO KHULNA ?

- 📍 Dhaka to Khulna
- 📍 Direct/connecting flight from Hazrat Shahjalal International Airport
- 📍 Fly to Jashore Airport (30 min), shuttle bus to Khulna (1.5 hrs).
- 📍 Train: Direct services from Dhaka and all over the country.
- 📍 Bus: Direct services from Dhaka and all over the country.
- 📍 Local Transport: Easy bike or rickshaw ride to Khulna University.

## FOR MORE DETAILS VISIT



KU



FACEBOOK



OIA

## Contact Us

📍 3rd Floor, Shahid Tajuddin Ahmed  
Administrative Building, Khulna University  
Khulna 9208, Bangladesh

☎ +88 02 4777 34173  
✉ office@io.ku.ac.bd





## KHULNA UNIVERSITY AT A GLANCE

Established in 1991, Khulna University (KU) in Bangladesh is a beacon of progress and interdisciplinary academic excellence. Renowned for its commitment to sustainability and innovation, KU has adopted English for its academic programs, ensuring its graduates are globally competitive and ready to contribute internationally.

Recent strategic reforms have significantly enhanced KU's academic framework and infrastructure, positioning it for more remarkable development. The university boasts state-of-the-art research facilities and a vibrant cultural and social scene, aligning with the standards of premier global institutions. Unique academic programs and achievements, such as partnerships with international universities and participation in global research initiatives, underscore KU's international engagement.

KU's focus on sustainability is evident in its campus-wide green initiatives and environmental research projects, making it a leader in eco-friendly education. The campus's lush greenery provides a stimulating academic rigor, creativity, and research environment.

With extensive sports, recreational facilities, and a wide array of student clubs, KU offers a well-rounded campus life. Comprehensive student support services, including career counseling and mental health support, ensure a nurturing environment for all students.

Join us at Khulna University, where we believe that education transcends boundaries and equips every student to make a meaningful global impact. Discover more about our dynamic community and how you can contribute to our quest for excellence and innovation.

8

Schools

29

Disciplines

5

Residential Halls

104

Labs

527+

Faculty Members

34+

Students from

815+

Officers & Staffs

5+

Countries

## COLLABORATION/PARTNERSHIP PROGRAMME

Khulna University has initiated collaborative programs with numerous prestigious global universities, offering students the chance to explore various cultures and study at partner institutions.

### COLLABORATION WITH THE EU ERASMUS MUNDUS JOINT MASTER DEGREE (EMJMD)

Khulna University signed an MoU with the EU Erasmus Mundus joint Master Degree for its students and faculties.

### COLLABORATION WITH YALE SCHOOL OF MEDICINE, YALE UNIVERSITY (USA) FOR JOINT RESEARCH

The collaboration between Khulna University and Yale University's School of Medicine in the USA aims to foster global health initiatives.

### COLLABORATION WITH AFYON KOCATEPE UNIVERSITY, TÜRKIYE

We are partnering with Afyon Kocatepe University, Türkiye, to unlock new opportunities in education, research, and cultural understanding, thereby strengthening ties between Bangladesh and Türkiye.

### COLLABORATION WITH D-8 INTERNATIONAL UNIVERSITY

Khulna University signed an MoU with D-8 International University, championing socio-economic collaboration across eight developing countries.

### COLLABORATION WITH DRESDEN UNIVERSITY OF TECHNOLOGY, GERMANY

Khulna University signed an MOU with Dresden University of Technology, Germany, for collaborative research.

**Our bilateral ties exist with several other countries, namely, PR China, Korea, Croatia, Malaysia, and India.**





## SUPPORT FOR INTERNATIONAL STUDENTS

### **Dedicated International Office:**

Personalized support from application to graduation.

**Comprehensive Transition Services:** Visa assistance, pre-arrival guidance, and orientation program.

**Holistic Support:** Information on accommodation, dining, transportation, and healthcare.

**Welcoming Community:** Efforts to minimize culture shock and enhance academic and

social integration.

**Personalized Attention:** One-on-one counseling and mentorship programs.

**Community Building:** Events and programs for international student integration.

**Language Support Services:** Courses in English and Bangla.

**Accessible Services:** Support is readily available through various platforms and dedicated office hours.



## CAMPUS LIFE

Khulna University invites you to discover a campus brimming with life, where academic ambitions intertwine with a vibrant array of social, cultural, and athletic endeavors.



**Engage with Diverse Clubs:** Dive into our eclectic mix of clubs, from technology enthusiasts to creative arts, offering something for every interest.



**Celebrate Cultural Diversity:** Experience our rich calendar of cultural festivals and events that showcase the global heritage of our student community.



**Lead and Achieve:** Witness firsthand the impact of student-led initiatives, where leadership and innovation pave the way for remarkable achievements.

**Experience Our Campus:** We encourage you to explore Khulna University through guided tours or virtual walkthroughs, giving you a glimpse into the dynamic community awaiting you.

## Degrees offered by KU

### Life Science

- Agrotechnology: BSc. (Hons.), MSc., PhD
- Biotechnology: BSc., MSc., PhD
- Environmental Science: BSc., MSc., PhD
- Fisheries and Marine Resource Technology: BSc., MSc., PhD
- Forestry and Wood Technology: BSc. (Hons.), MSc., PhD
- Pharmacy: B.Pharm., M.Pharm.
- Soil, Water and Environment: BSc.(Hons.), MSc., PhD

### Science, Engineering and Technology

- Architecture: BArch, MScHS
- Chemistry: BSc (Hons.), MSc., PhD
- Computer Science and Engineering: BSc. Engg., MSc. Engg., MCA, PhD, PGDIT
- Electronics and Communication Engineering: BSc. Engg., MSc. Engg., PhD
- Mathematics: BSc. (Hons.), MSc., PhD
- Physics: BSc. (Hons.), MSc., PhD
- Statistics: BSc. (Hons.), MSc., PhD
- Urban and Rural Planning: BURP, MURP, PhD

### Management and Business Administration

- Business Administration: BBA, MBA, MBA (Evening), Defense MBA
- Human Resource Management: BBA, MBA

### Social Science

- Development Studies: BSS (Hons.), MDS, PhD
- Economics: BSS (Hons.), MSS, MDPS, PhD
- Mass Communication and Journalism: BSS (Hons.)
- Sociology: BSS (Hons.), MSS, MPGS, PhD

### Arts and Humanities

- Bangla
- English

### Law

- Law: LLB, LLM

### Fine Arts

- Fine Arts School offers BFA and MFA degrees.

### Education

- Education: BEd, MEd, PGEd.





## QUALITY EDUCATION



**National Recognition:** 2nd place among Bangladesh's public universities for quality education and research.

**Innovative Programs:** First in Bangladesh: Architecture, Biotechnology and Genetic Engineering, Business Administration, Computer Science and Engineering, Electronics and Communication Engineering, Environmental Science, Forestry and Wood Technology, Human Resource Management, and Urban and Rural Planning.

**Unique Research Institutes:** Home to the world's first Institute for Integrated Studies on the Sundarbans and Coastal Ecosystems (IISCE). The university has a Centre of Excellence in Teaching and Learning (CETL) established by the University Grants Commission (UGC), Bangladesh. The university also set up its Institutional Quality Assurance Cell (IQAC) which works to ensure quality education, research, and governance.

**Academic Excellence:** Enhanced curricula, the country's first soil archive, and notable achievements in different international and national competitions.

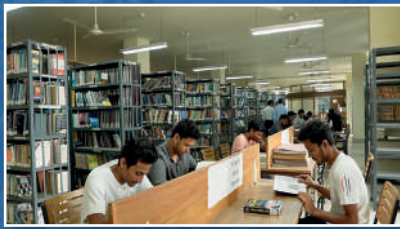
**Comprehensive Academic Calendar:** Orientation and class commencement for new students from January 1st and year ending on December 31.

**Academic Competitions:** A three-minute thesis competition. Gaming app competition, Innovation Hub competition.

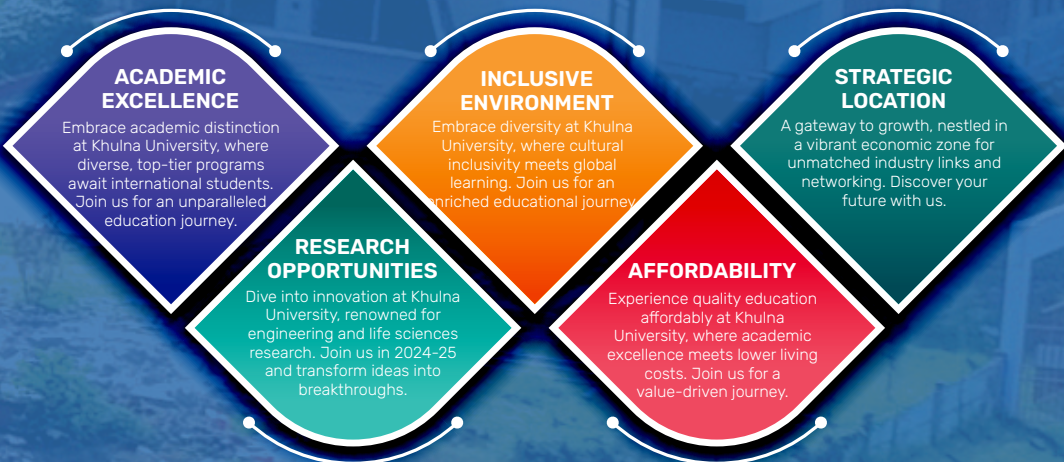
**Education System Innovations:** The first public university in Bangladesh to implement the Course Credit System (CCS) and adopt the Semester Credit Hour (SCH) system.

**Campus Culture:** The only university in Bangladesh that is free from campus politics and guarantees on-time degree completion.

**Global Learning Environment:** Over 7,000 students in a culturally rich, diverse community with 35+ international students.



## 5 Reasons to Study at KU



## LEARNING ENVIRONMENT

Khulna University is dedicated to fostering a vibrant ecosystem for learning characterized by innovation, creativity, and academic rigor. Our campus is not just spacious but is equipped with the latest facilities and cutting-edge laboratories, making it the perfect backdrop for discovery and excellence.

**Innovative Spirit:** Our environment is tailored to spark innovation with initiatives and projects that push the boundaries of traditional learning.

**State-of-the-Art Facilities:** From modern laboratories to collaborative workspaces, our campus is designed to support your academic journey every step of the way.

**Collaborative Culture:** We thrive on the dynamic interaction between students and faculty, fostering a community that values discussion, teamwork, and interdisciplinary research.

**Critical Thinking and Real-World Application:** Our curriculum encourages critical thinking and problem-solving, emphasizing applying knowledge in real-world scenarios.

**Sustainability and Engagement:** Commitment to sustainability and active community engagement is at our core, preparing students to lead responsibly globally.

## RESEARCH & INNOVATION

Khulna University stands at the forefront of research and innovation, especially within engineering, life sciences and social sciences. Renowned for its contribution to global knowledge, including prestigious accolades in international arenas and groundbreaking research such as exploring medicinal plants in the Sundarbans, our University is home to a vibrant community of over 500 distinguished faculty members. This rich environment not only promotes the advancement of knowledge but also empowers our students to be at the helm of innovation. With a track record of tangible impacts through research and a robust support system for innovation, including industry partnerships and entrepreneurship initiatives, we're crafting leaders ready to address global challenges. As we welcome the 2024-2025 International Admissions cycle, we invite you to become part of a community dedicated to making a profound global impact.

